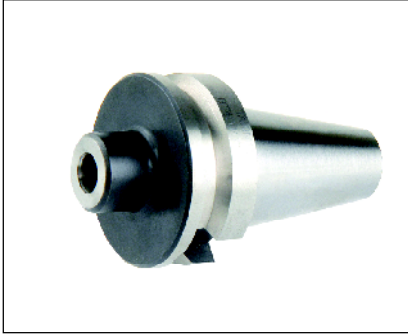
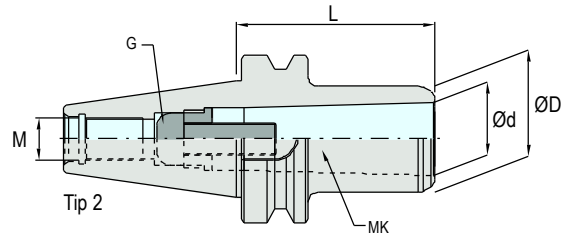
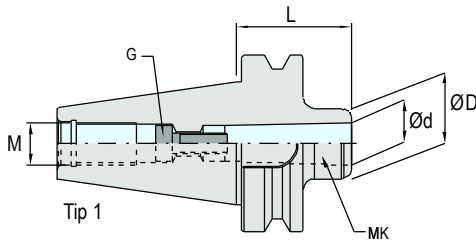


Mors konik tutucu DIN 228 - 2 Form C - Form A

Toolholder - Morse Taper - DIN 228 - 2 Form C - Form A

Werkzeughalter - Morsekegel - DIN 228 - 2 Form C - Form A



Kod Code Bezeichnung	Ölçüler Dimensions Abmessungen							
	MK	Ød	ØD	L	Tip	G	M	
BT40	MTB1 45	1	12.065	25	45	1	M6x1	M16
	MTB2 60	2	17.780	32	60	1	M10x1.5	
	MTB3 45	3	23.825	40	45	2	M12x1.75	
	MTB4 85	4	31.267	50	85	2	M16x2	
CAT40	MTB1 45	1	12.065	25	45	1	M6x1	
	MTB2 60	2	17.780	32	60	1	M10x1.5	
	MTB3 45	3	23.825	40	45	2	M12x1.75	
	MTB4 85	4	31.267	50	85	2	M16x2	
IT40	MTB1 45	1	12.065	25	45	1	M6x1	
	MTB2 60	2	17.780	32	60	1	M10x1.5	
	MTB3 45	3	23.825	40	45	2	M12x1.75	
	MTB4 85	4	31.267	50	85	2	M16x2	
BT50	MTB1 45	1	12.065	25	45	1	M6x1	M24
	MTB2 45	2	17.780	32	45	1	M10x1.5	
	MTB3 60	3	23.825	40	60	1	M12x1.75	
	MTB4 75	4	31.267	50	75	1	M16x2	
	MTB5 105	5	44.399	70	105	2	M20x2.5	
CAT50	MTB1 45	1	12.065	25	45	1	M6x1	
	MTB2 45	2	17.780	32	45	1	M10x1.5	
	MTB3 60	3	23.825	40	60	1	M12x1.75	
	MTB4 75	4	31.267	50	75	1	M16x2	
	MTB5 105	5	44.399	70	105	2	M20x2.5	
IT50	MTB1 45	1	12.065	25	45	1	M6x1	
	MTB2 45	2	17.780	32	45	1	M10x1.5	
	MTB3 60	3	23.825	40	60	1	M12x1.75	
	MTB4 75	4	31.267	50	75	1	M16x2	
	MTB5 105	5	44.399	70	105	2	M20x2.5	

Sipariş Örneği / Ordering Example / Bestellbeispiel ab Lager : BT40 MTB1 45